

19 30

PIN POST INSULATOR	
CAT. NO. 144	
F-NECK	1" PINHOLE
14.4 kV	

ENG. MGR
 ENG
 PURCH.
 MKTG.
 PLT. MGR.
 COST
 PROD.
 INSP
 GLAZE
 BUSHING
 MAKING
 SHIP
 ASSEM
 MODEL
 MACH.
 45
 TOOLING
 CER LAB
 EL LAB
 Q. A.

DIMENSIONS

LEAKAGE DISTANCE	IN	7
DRY ARCING DISTANCE	IN	5.5
MINIMUM PIN HEIGHT	IN	5

MECHANICAL VALUES

CANTILEVER STRENGTH	LB	2,000
---------------------	----	-------

ELECTRICAL VALUES

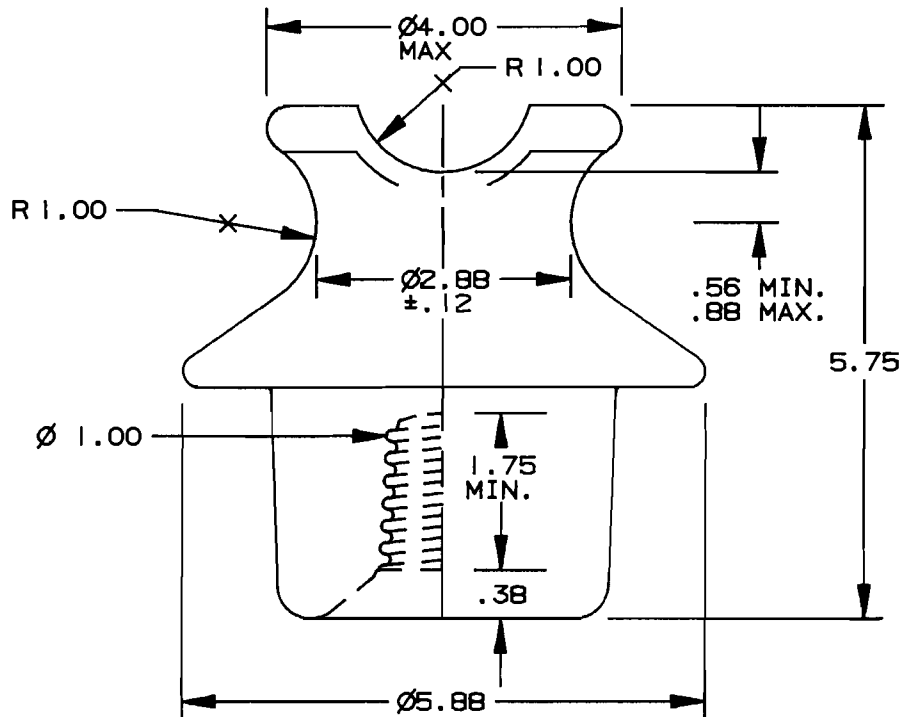
60 HERTZ FLASHOVER-DRY	kV	65
60 HERTZ FLASHOVER-WET	kV	35
IMPULSE FLASHOVER-POS.	kV	100
IMPULSE FLASHOVER-NEG.	kV	130
60 HERTZ PUNCTURE VOLTAGE	kV	150

RADIO INFLUENCE VOLTAGE DATA

60 HERTZ TEST VOLTAGE, RMS TO GRD.	kV	10
MAXIMUM RIV @ 1000 kHz	μ V	5,500

PACKING INFORMATION

NET WEIGHT, PER 100	LB	500
PACKED WEIGHT, PER 100	LB	540
NO. IN STANDARD PACKAGE		9



THIS DRAWING IS THE PROPERTY OF
 VICTOR INSULATORS, INC. AND CONTAINS
 PROPRIETARY AND CONFIDENTIAL INFORMATION
 WHICH MUST NOT BE REPRODUCED, COPIED,
 OR DISCLOSED OTHER THAN AS EXPRESSLY
 AUTHORIZED BY VICTOR INSULATORS, INC.

FILE 144

	Victor Insulators, Inc.
	280 MAPLE AVENUE
	MAIL: P.O. BOX 8, VICTOR, NEW YORK 14584 TELEPHONE: (716) 924-2127

144

4-7-95

TP