

30

PIN TYPE INSULATOR  
 CAT. NO. 35  
 C-NECK

1 ENG. MGR.  
 2 ENG.  
 PURCH.  
 1 MKTG.  
 FLT. MGR.  
 COST  
 PROD.  
 INSP.  
 GLAZE  
 BUSHING  
 MAKING  
 SHIP.  
 ASSEM.  
 MODEL  
 MACH.  
 45  
 TOOLING  
 CER. LAB.  
 1 EL. LAB.  
 Q.A.

DIMENSIONS

LEAKAGE DISTANCE	IN	11
DRY ARCING DISTANCE	IN	5.25
MINIMUM PIN HEIGHT	IN	6

MECHANICAL VALUES

CANTILEVER STRENGTH	LB	2,500
---------------------	----	-------

ELECTRICAL VALUES

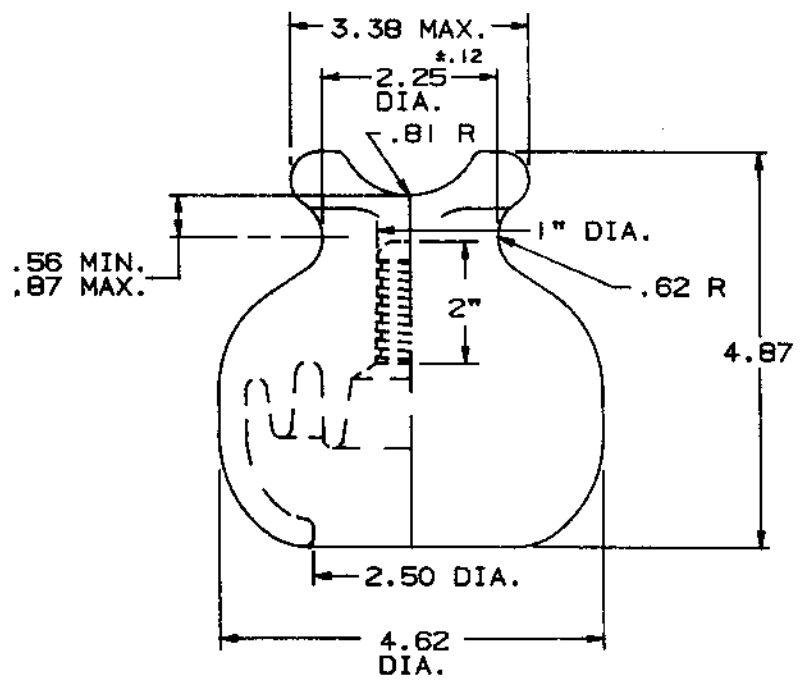
IMPULSE FLASHOVER-POS.	kV	120
IMPULSE FLASHOVER-NEG.	kV	110
60 HERTZ FLASHOVER-WET	kV	35
60 HERTZ FLASHOVER-DRY	kV	65
60 HERTZ PUNCTURE VOLTAGE	kV	90

RADIO INFLUENCE VOLTAGE DATA


MAXIMUM RIV @ 1000 kHz		
PLAIN @ 10 kV APPLIED	μV	5,500

PACKING INFORMATION

NET WEIGHT ,PER 100	LB	307
PACKED WEIGHT ,PER 100	LB	327
NO. IN STANDARD PACKAGE		18



THIS DRAWING IS THE PROPERTY OF  
 VICTOR INSULATORS, INC. AND CONTAINS  
 PROPRIETARY AND CONFIDENTIAL INFORMATION  
 WHICH MUST NOT BE REPRODUCED, COPIED,  
 OR DISCLOSED OTHER THAN AS EXPRESSLY  
 AUTHORIZED BY VICTOR INSULATORS, INC.


**Victor Insulators, Inc.**  
 280 MAPLE AVENUE  
 MAIL P.O. BOX B, VICTOR, NEW YORK 14554  
 TELEPHONE: (716)924-2127

35

4-2-93

RR PAP AGS

SUPERSEDES DWG. 35 DATED 11-22-91