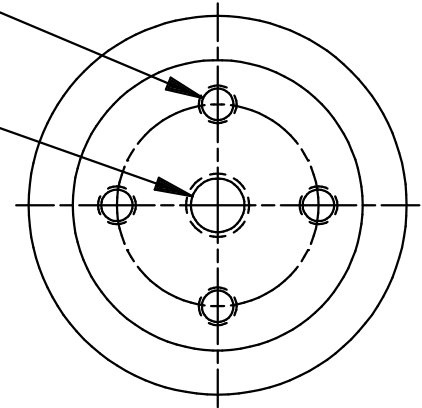


7

ENG. MGR.
 ENG.
 MKTG.
 EL. LAB

TOP AND BOTTOM INSERTS
 4, $\frac{3}{8}$ "-16 NC ON 2" B.C.
 $\frac{1}{2}$ " FULL THREAD
 1, $\frac{5}{8}$ "-11 NC
 $\frac{3}{4}$ " FULL THREAD



MECHANICAL VALUES

| | | |
|----------------------|-------|--------|
| CANTILEVER STRENGTH | LB | 750 |
| TENSILE STRENGTH | LB | 1,500 |
| TORSION STRENGTH | IN-LB | 1,500 |
| COMPRESSION STRENGTH | LB | 10,000 |

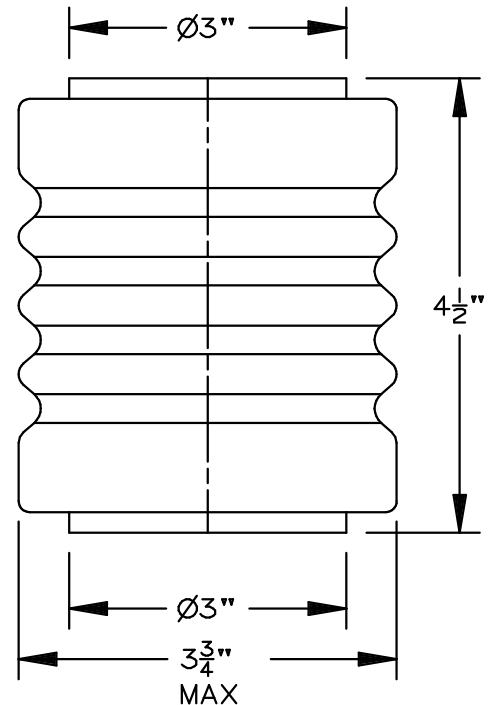
ELECTRICAL VALUES

| | | |
|------------------------|----|-----|
| NEMA, VOLTAGE RATING | kV | 7.2 |
| 60 HERTZ WITHSTAND-DRY | kV | 26 |
| 60 HERTZ WITHSTAND-DEW | kV | 24 |
| IMPULSE WITHSTAND | kV | 75 |

PACKING INFORMATION

| | | |
|------------------------|----|-----|
| PACKED WEIGHT ,PER 100 | LB | 495 |
|------------------------|----|-----|

+ CANTILEVER STRENGTH GIVEN
 2-1/2" ABOVE TOP.



THIS DRAWING IS THE PROPERTY OF
 VICTOR INSULATORS, INC. AND CONTAINS
 PROPRIETARY AND CONFIDENTIAL INFORMATION
 WHICH MUST NOT BE DUPLICATED, USED,
 OR DISCLOSED OTHER THAN AS EXPRESSLY
 AUTHORIZED BY VICTOR INSULATORS, INC.

APPROVED
 By A. E. Schwalm at 7:51 am, Aug 05, 2014

| | | | | |
|----------|--|----|--|---|
| 07-25-14 | | TM | | A |
| 03-15-10 | | TM | | |



Victor Insulators, Inc.
 280 MAPLE AVENUE
 VICTOR, NEW YORK 14564
 TELEPHONE: (585)924-2127

5652

FILE: 5652