

30

CLAMP TOP LINE POST

34.5kV HORIZONTAL MOUNT.

CAT. NO. 62255

ANSI CLASS 57-22

- 1 ENG. MGR.
- 2 ENG.
- PURCH.
- MKTG.
- SUPT
- COST
- PROD.
- INSP.
- GLAZING
- BUSHING
- MAKING
- SHIP
- ASSEM.
- MACH.
- 45
- TOOLING
- CER. LAB.
- EL. LAB.
- Q. A.

DIMENSIONS

LEAKAGE DISTANCE	IN	22
DRY ARCING DISTANCE	IN	9 1/2

MECHANICAL VALUES

CANTILEVER STRENGTH	LB	2800
---------------------	----	------

ELECTRICAL VALUES

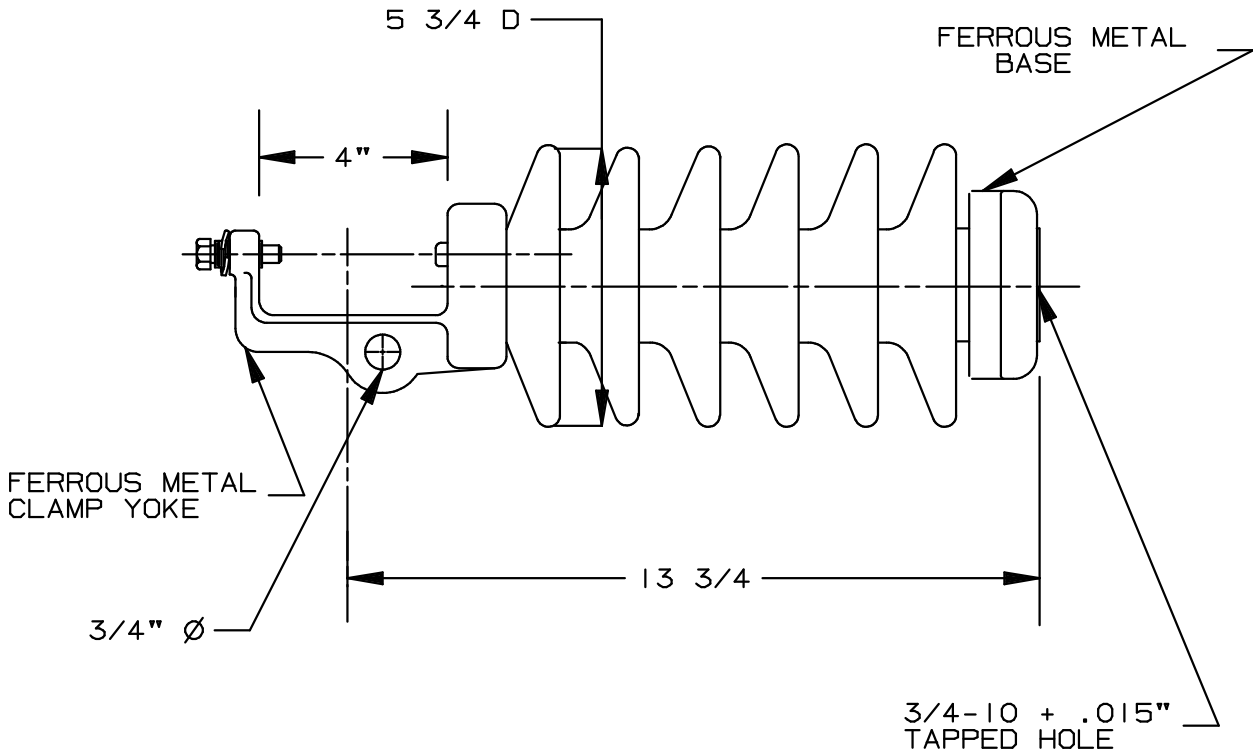
60 Hz FLASHOVER-DRY	kV	100
60 Hz FLASHOVER-WET	kV	70
IMPULSE FLASHOVER-POS.	kV	160

RADIO INFLUENCE VOLTAGE TEST

60 Hz TEST VOLTAGE RMS TO GRD.	kV	22
MAX. R.I.V. @ 1000 kHz	μV	100

PACKING INFORMATION

NET WEIGHT PER 100	LB	2050
GROSS WEIGHT PER 100	LB	2110
NUMBER IN STANDARD PACKAGE		3



THIS DRAWING IS THE PROPERTY OF VICTOR INSULATORS, INC. AND CONTAINS PROPRIETARY AND CONFIDENTIAL INFORMATION WHICH MUST NOT BE DUPLICATED, USED, OR DISCLOSED OTHER THAN AS EXPRESSLY AUTHORIZED BY VICTOR INSULATORS, INC.

FILE: 62255

7-19-96 MM PP AS

	Victor Insulators, Inc. 280 MAPLE AVENUE VICTOR, NEW YORK 14564 TELEPHONE: (716)924-2127
---	---

62255