

16

GUY STRAIN INSULATOR  
 CAT. NO. VI 4604  
 ANSI CLASS NO. 54-2

1 ENG. MGR  
 2 ENG  
 PURCH.  
 1 MKTG.  
 PLT. MGR.  
 COST  
 PROD.  
 INSP  
 GLAZE  
 BUSHING  
 MAKING  
 SHIP  
 ASSEM  
 MODEL  
 MACH.  
 45  
 TOOLING  
 CER LAB  
 EL LAB  
 E.MEDIA

DIMENSIONS

LEAKAGE DISTANCE IN 1.87  
 MAXIMUM CABLE DIA. IN .50

MECHANICAL VALUES

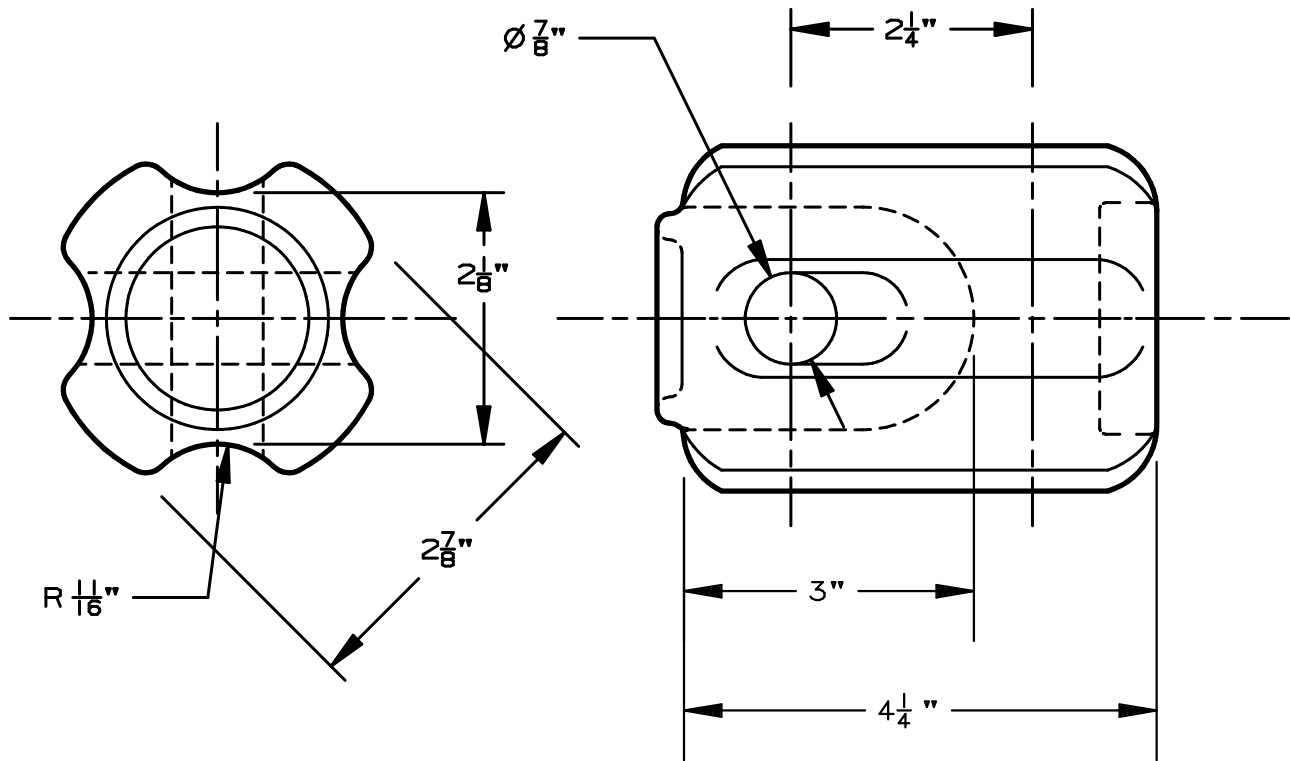
TENSILE STRENGTH LB 12,000

ELECTRICAL VALUES

60 HERTZ FLASHOVER-DRY kV 30  
 60 HERTZ FLASHOVER-WET kV 15

PACKING INFORMATION

NET WEIGHT PER 100 LB 173  
 PACKED WEIGHT PER 100 LB 181  
 NO. IN STANDARD PACKAGE 30



**APPROVED**  
 By A. E. Schwalm at 2:33 pm, Feb 02, 2012

02-01-12	TM		B
01-24-05	TM		A
3-18-02	TM	PP AS	

**VI** INSULATORS  
 VICTOR INSULATORS, INC.  
 280 MAPLE AVENUE  
 VICTOR, NEW YORK 14564  
 TELEPHONE: (585)924-2127

VI 4604

THIS DRAWING IS THE PROPERTY OF VICTOR INSULATORS, INC. AND CONTAINS PROPRIETARY AND CONFIDENTIAL INFORMATION WHICH MUST NOT BE DUPLICATED, USED, OR DISCLOSED OTHER THAN AS EXPRESSLY AUTHORIZED BY VICTOR INSULATORS, INC.

FILE: VI 4604