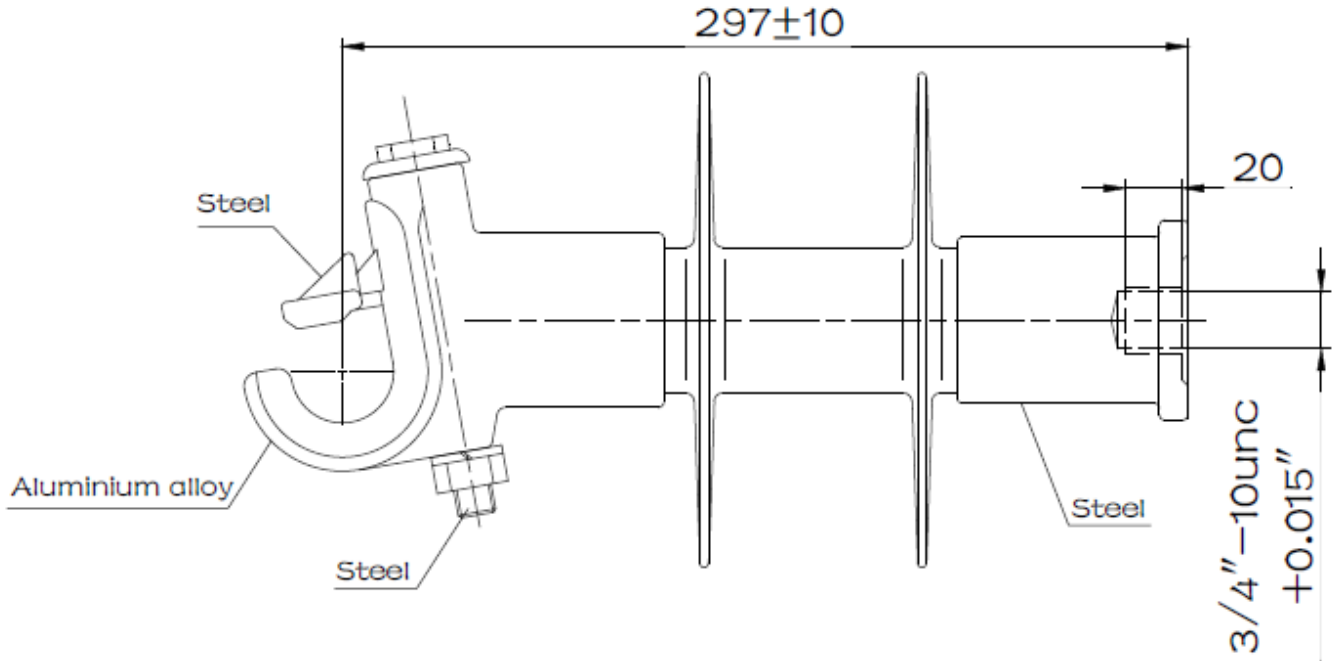


COMPOSITE INSULATOR

CAT. NO. VI 15U

- 1 ENG. MGR
- 2 ENG
- PURCH.
- 1 MKTG.
- PLT.MGR.
- COST
- PRD.
- INSP
- GLAZE
- BUSHING
- MAKING
- SHIP
- ASSEM
- MODEL
- MACH.
- 45
- TOOLING
- CER LAB
- 1 EL LAB
- 1 E.MEDIA

EXCEPT BASE THREADING, ALL DIMENSIONS ARE IN mm



TECHNICAL SPECIFICATIONS:

LEAKAGE DISTANCE	mm	275
DRY ARCING DISTANCE	mm	180
SPECIFIED CANTILEVER LOAD (SCL)	kN	12.5
SPECIFIED TENSILE LOAD(STL)	kN	22
60 HERTZ FLASHOVER, DRY	kV	75
60 HERTZ FLASHOVER, WET	kV	42
IMPULSE FLASHOVER, POSITIVE	kV	130
RIV 60 HERTZ TEST VOLTAGE	kV	10
MAXIMUM RIV @ 1000 KHz	µV	2.5

THIS DRAWING IS THE PROPERTY OF VICTOR INSULATORS, INC. AND CONTAINS PROPRIETARY AND CONFIDENTIAL INFORMATION WHICH MUST NOT BE DUPLICATED, USED, OR DISCLOSED OTHER THAN AS EXPRESSLY AUTHORIZED BY VICTOR INSULATORS, INC.

APPROVED
By A. E. Schwalm at 3:04 pm, Jun 18, 2018



Victor Insulators, Inc.
 280 Maple Avenue
 Victor, New York 14564
 Telephone: (585)924-2127
 www.victorinsulators.com

VI 15U

06-18-18

TM

FILE: VI 15U